

The GatorCam 2



... an operator-controlled system specifically designed to **View**, **Video-record** and **Pinpoint** underground obstacles, blockages, damage etc., in small-bore underground utility/service pipes.



Radiodetection

Clear the problem with:

A range of cable lengths to suit most pipework applications.

A range of cameras - black and white or color - for clarity.

Robust and easy to use operator control center.

A system that will operate from 115Vac or 12Vdc power supplies

The GatorCam



A Range of Cable Lengths
(Standard or Mini)

Introduction

The **Radiodetection GatorCam system** has been designed for the internal inspection of small-bore pipes 1½ in (38 mm) to approximately 10in (250 mm) in diameter, up to a distance of 400ft (120 m).

The GatorCam system is perfect for:

inspecting underground sewer utility/service pipes, septic tanks, boiler tubes, electric conduits, chimneys etc, in fact most places where the eye cannot see.

The GatorCam system comprises:

a **waterproofed**, cable-mounted camera, with a **scratch-resistant** sapphire lens, which relays television pictures back to an easy to use, portable control center. The control center contains a television screen, video recorder and user controls. In fact, everything that the operator needs - in a compact, robust carrying case.

The camera cable is semi-rigid and acts as a push-rod, yet is sufficiently flexible to negotiate tight bends. The camera head is **protected** against damage to the lens and its LEDs. A range of purpose-designed skids ensure that the camera is in the optimum position within the pipe.



Rugged Control Box

GatorCam System

The GatorCam can be configured to provide **two types of system**, either a standard camera mounted system on a standard cable reel or a mini camera system mounted on a mini cable reel.

The Standard Cable Reel

The standard cable reel comprises up to 400 ft (120 m) of semi-rigid camera cable with a 1¾ in in (43 mm) camera (**color or black/white**) mounted at the cable head. The standard cable reel is suitable for inspecting pipes from 2 in (50 mm) to approximately 10 in (250 mm) in diameter.

The Mini Cable Reel

The mini cable reel comprises up to 200 ft (60 m) of semi-rigid camera cable with a 1 in (25 mm) camera (black/white only) mounted at the cable head. The mini cable reel is suitable for inspecting pipes from 1½ in (38 mm) to approximately 6 in (150 mm) in diameter.

GatorCam Control Box

The Standard Cable Reel and the Mini Cable Reel both interface with a compact and portable control box. The control box allows the operator to **view** the image as seen by the camera. The operator can even **video-tape** the complete inspection process if required. The operator also has the facility to title the video-tape with address/location details and date/time information.



A Range of Camera Heads

Main Features



Easy-to-Use Controls

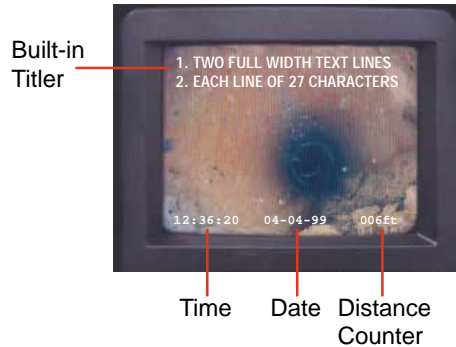
The control box is **ruggedised** to withstand the rigours of every-day use. Viewing of the screen is optimised, even in bright conditions, with matt black surrounds keeping reflections to a minimum. The cover also acts as a sun or weather shield and can be locked at any convenient angle.

☆ The GatorCam system has a range of cable lengths (up to 400 ft) that will suit most small bore pipes.

☆ The camera system can be configured for **black and white**, or **color**.

☆ High brightness LEDs around the camera lens provide extremely **high visibility** in pipes up to 10 in (250 mm) in diameter.

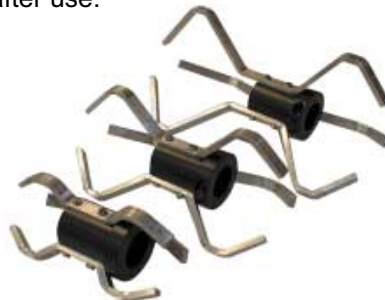
- ☆ The GatorCam system provides:
 - (1) On-screen distance counter, showing the amount of cable deployed.
 - (2) On-screen date and time information.
 - (3) Integral titler at no extra cost so that customer details can be displayed on-screen.
 - (4) Picture inverter.
 - (5) Built-in transmitter.



On-Screen Information

- ☆ To protect your investment the face of the camera is partially shrouded by the camera casing. This will prevent damage to the lens and LEDs. Extra protection is afforded by a P-trap skid, which is easily fitted to the camera casing, to help ease the camera round P-traps and bends.

- ☆ The cable reels have a protective coating on the tubular frame. This feature, and the open framework, allows the reel and cable to be hosed down after use.



Purpose Designed Skids

- ☆ The camera cable is semi-rigid and acts a push-rod, yet is sufficiently flexible to negotiate tight bends.



LEDs To Show You The Way

- ☆ The GatorCam contains an integrated, active sonde-like locating system. At the touch of a button from the control box the GatorCam sends a locate signal to the camera-head. Using a suitable locator (Gator Locator) the position of the camera below ground can be accurately pinpointed.

- ☆ The GatorCam system has a range of accessories, some optional, to make the task even easier.



Control Box Viewed Open

Operating The GatorCam

The GatorCam system is an extremely versatile system, and is easy to use. To make it even simpler, the system can be operated from a range of input supplies:

- ❑ 115 V ac mains input supply,
- ❑ 12 V dc supply.

The 12 V dc supply must be applied through an inverter (optional accessory) in order to provide the appropriate 115 V ac input supply. The GatorCam can therefore be powered-up from a vehicle's 12 V electrical supply.

Powering-up The GatorCam

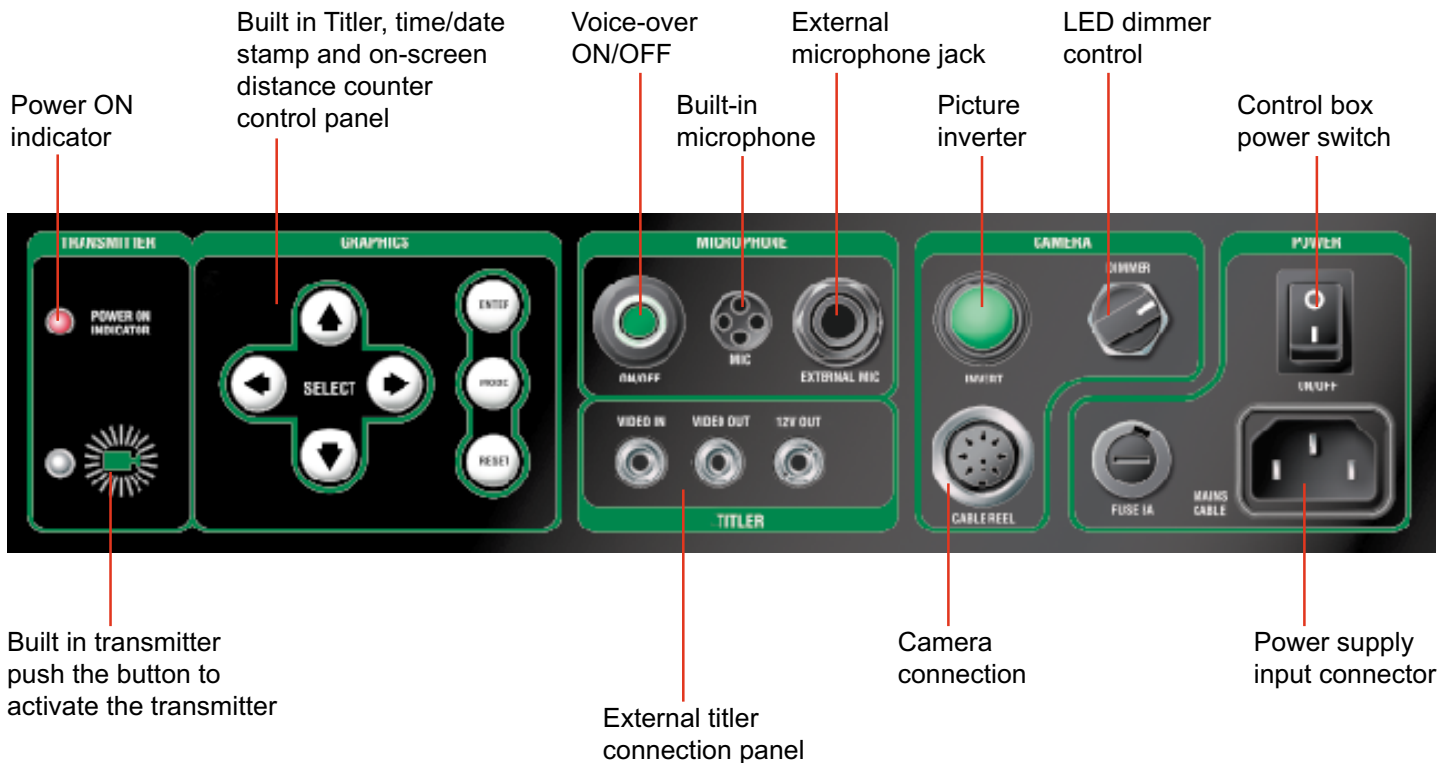
The system is easy to power-up, and operate. Simply lift open the control box cover, connect the cable reel to the GatorCam control box and the GatorCam control box to a suitable power supply. The GatorCam is now ready to operate.

Full user instructions are provided in the accompanying User Guide.

Accessories

The GatorCam comes with a range of optional accessories:

- ✓ 12 V dc Adapter
- ✓ Gator Locator
- ✓ Gator Tx
- ✓ Full Text Editor
- ✓ A Range of Skids (to hold the camera centrally within the pipe).



Specifications

GatorCam Cable Specifications

| | Standard Cable Reel | Mini Cable Reel |
|--------------|--|--|
| Size | 26 in x 12 in x 33 in (650 mm x 300 mm x 846 mm) | 17 in x 10.5 in x 22 in (440 mm x 265 mm x 565 mm) |
| Capacity | 200 ft (60 m) 300 ft (90 m) 400 ft (120 m) | 100 ft (30 m) 200 ft (60 m) |
| Weight | 200 ft = 44.7 lbs (20.3 Kg) 400 ft = 65.5 lbs (29.8 Kg) | 100 ft = 25.5 lbs (11.6 Kg) 200 ft = 34.3 lbs (15.6 Kg) |
| Construction | Reel - mild steel Stand - mild steel tube | Reel - mild steel Stand - mild steel tube |

GatorCam Camera specifications

| | Mini Camera | Standard Camera | Color Camera |
|--------------------------|--|--|--|
| Dimensions | 1 in x 2.07 in (25.4 mm x 52.5 mm) | 1.68 in x 1.87 in (42.6 mm x 48 mm) | 1.68 in x 2.7 in (42.6 mm x 68.5 mm) |
| Power | 2.7 W | 3.1 W | 3.9 W |
| Operating Depth | 105 m (150psi) | 105 m (150psi) | 105 m (150psi) |
| Housing Materials | Stainless steel housing with shatterproof polycarbonate nose piece. Sapphire Lens. | Stainless steel housing with shatterproof polycarbonate nose piece. Sapphire Lens. | Stainless steel housing with shatterproof polycarbonate nose piece. Sapphire Lens. |
| Operating Pipe Diameters | 1.5 in to 6 in (38 mm to 152 mm) | 2 in to 10 in (50 mm to 250 mm) | 2 in to 10 in (50 mm to 250 mm) |
| Resolution | 380 (H) x 380 (V) | 380 (H) x 380 (V) | 570 TV Lines (H) |
| Illumination | 18,000 Mcd bright | 58,800 Mcd bright | 42,000 Mcd bright |

Gator Locator Specifications

| | |
|---------------------------|---|
| Operating modes/Frequency | Camera locator/512 Hz Pipe Locator/65 kHz Power Cable Locator/60 Hz |
| Dynamic Range | 92 dB |
| Depth Range | 18 ft (6 m) 9 ft (3 m) in cast iron pipe |
| Search Antennas | Two dual-wound symmetrical response |
| Indicators Weight | LCD, audible tone 4.8 lbs (2.2 kg) |
| Batteries | 12 x AA (30 hrs of life @ 60° F) |

Locating the GatorCam



Locating the GatorCam camera could not be simpler. **Use the Gator Locator!** The Gator Locator is a high-tech instrument that tells you where the camera pipe is, and at what depth. With the touch of a button you can locate not only the GatorCam camera but cast iron pipe to a depth of 3 m, and plastic and clay pipe to a depth of 6 m.

To let you know precisely where the target is, the locator's LCD display shows a digital read-out of depth, as well as a bar-graph display and audible tone.



World Wide Web: <http://www.radiodetection.com>



Radiodetection Ltd
Western Drive
Bristol BS14 OAZ
United Kingdom

Tel +44 (0)117 976 7776
Fax +44 (0)117 976 7775
sales.uk@radiodetection.com



Radiodetection SRO
Sumavska 15
602 00 Brno
Czech Republic

Tel +42 (5) 41248485
Fax +42 (5) 41248351
sales.cz@radiodetection.com



Radiodetection Corp
35 Whitney Road
Mahwah NJ 07430
USA

Tel +1 (201) 848-8070
Fax +1 (201) 848-1303
sales.us@radiodetection.com



Radiodetection Sp. z.o.o
ul. Knapowskiego 23
60-126 Poznan
Poland

Tel +48 (0)61 8668298
Fax +48 (0)61 8668279
sales.pl@radiodetection.com



Radiodetection GmbH
Rauhe Straße 18
D-46459 Rees
Germany

Tel +49 (0)2851-9237-20
Fax +49 (0)2851-9237-520
sales.de@radiodetection.com



Radiodetection Pty Ltd
PO Box 768, Sanlamhof 7532
Cape Town
South Africa

Tel +27 (0)21 946 1096
Fax +27 (0)21 948 2528
sales.za@radiodetection.com



Radiodetection SARL
13 Grand Rue
76220 Neuf Marché
France

Tel +33 (0)2 32 89 93 60
Fax +33 (0)2 35 90 95 58
sales.fr@radiodetection.com



Radiodetection ROM S.R.L
Str. Lt. Av. Ion Garofeanu NR.22
Sector 5
Bucharest
Romania

Tel +4-01-4116844
Fax +4-01-4209541
sales.ro@radiodetection.com



Radiodetection S.r.l
Via XX Settembre 43
27020 Gravelona Lom (PV)
Italy

Tel +39 0381 959811
Fax +39 0381 95884
sales.it@radiodetection.com



Radiodetection Megamma Kft
Irinyi u. 17
H-6000 Kecskemet
Hungary

Tel +36 76 484 781
Fax +36 76 484 781
sales.hu@radiodetection.com



Radiodetection B.V. Benelux
Industriestraat
7041 GD 's-Heerenberg
Netherlands

Tel +31 (0)314 66 47 00
Fax +31 (0)314 66 41 30
sales.nl@radiodetection.com



Radiodetection S.L.
Marquesa Vda
de Aldama 4-6 1-1
Alcobendas 28100 Madrid
Spain

Tel +34.916.636.375
Fax +34.916.636.376
sales.es@radiodetection.com



Radiodetection (Canada) Ltd
344 Edgeley Blvd
Unit 34 Concord
Ontario L4K 4B7
Canada

Tel +1 (905) 660-9995
Fax +1 (905) 660-9579
sales.ca@radiodetection.com



Radiodetection Ukraine Ltd
Khoriva Street 40, Apt 2
254071, Kiev 71
Ukraine

Tel +380 44 463-73-88
Fax +380 44 463-73-88
sales.ua@radiodetection.com



América Latina
Radiodetection Corp
35 Whitney Road
Mahwah NJ 07430
USA

Tel +1 (201) 848-8070
Fax +1 (201) 848-1303
sales.latinam@radiodetection.com



Radiodetection JV SDN.BHD.
21-1 & 23-1, 1st Floor
Jalan 26/70A Desa Sri Hartamas
50480 Kuala Lumpur
Malaysia

Tel +603 4300950
Fax +603 4300956
sales.my@radiodetection.com



Radiodetection (Japan) Ltd.
Room 203, Maida Building
7-25 Hiroshiba - Cho
Suita, Osaka 564-0052
Japan

Tel +81 (0)6 6192 0211
Fax +81 (0)6 6192 0212
sales.jp@radiodetection.com



Radiodetection Overseas
Western Drive
Bristol BS14 OAZ
United Kingdom

Tel +44 (0)117 9767776
Fax +44 (0)117 9760088
sales.rol@radiodetection.com



Radiodetection (China) Ltd.
Room 1209-10, Concordia Plaza
No.1 Science Museum Road
Kowloon
Hong Kong

Tel +852 2803 5881
Fax +852 2803 5863
sales.cn@radiodetection.com



Radiodetection

All Rights Reserved

Warranty

From the date of purchase through the applicable warranty period, Radiodetection will repair free of charge any warranted item which is found to be defective. All warranty inspections and warranty repairs must be performed by approved Radiodetection Service Centers.

Radiodetection accepts no responsibility for repairs needed as a result of misuse of the equipment, or as a consequence of servicing/repair carried out by unqualified persons, or from using parts not supplied by the company.

Radiodetection makes every effort to ensure that information about locating equipment and its use is correct. Radiodetection accepts no responsibility for damage or problems caused through use of the equipment. Priority must be given to local and national safety requirements. Radiodetection products are under continuous development and are subject to change without notice.

90/GATOR2/US/2 08.01