

VIVAX METROTECH

vLoc3-5000 UTILITY LOCATOR

- Signal Select™ for positive line ID
- Real-time EMF Distortion Alert
- Internal Bluetooth and GPS
- Offset vector locate mode
- Cloud-based data warehousing
- Optional receiver/transmitter link

The vLoc3-5000 is the pinnacle in utility locating instruments. The vLoc3-5000 is the only locator to combine Signal Select™, Signal Direction, real-time distortion alerts and internal GPS into one locator. Locate and GPS data can be stored in the locator and downloaded later for further analysis or use the free VM-MAP smartphone application to send the data directly to the cloud to create real-time maps.

The receiver has a broad range of active frequencies from 16Hz to 200kHz and passive modes of power and radio. SD (Signal Direction) and SiS (Signal Select™) are standard with the vLoc3-5000 to help identify the target line in congested areas.

In addition to the classic locate screens the vLoc3 series locators offer new locate perspective screens of Vector Locate for fully automatic non-walk over locating, Transverse Graph showing both peak and null simultaneously providing immediate measurement of signal distortion, Plan View showing the relative orientation of the target line at any angle, and a new graphical sonde screen with guidance arrows leading to the sonde location even when it is vertical.

Internal GPS and Bluetooth

Weatherproof speaker

Rechargeable Li-ion battery or six x AA Alkaline

USB Data Port

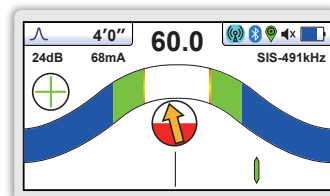
Accessory and charging socket

Optional radio link to receiver and transmitter

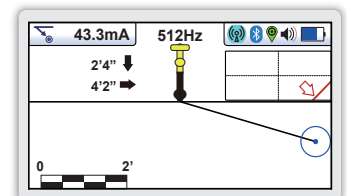
Two sets of 3D antennas

High impact thermoplastic (ABS) injected molded housings

Optional plug-in EMS marker locator

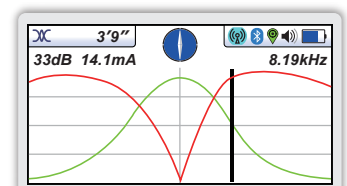


Classic Screen

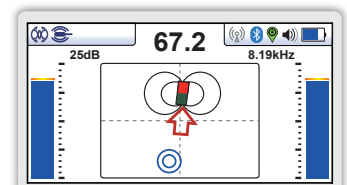


Vector Locate
(Lateral Position & Depth)

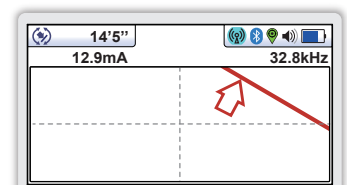
High visibility 4.3"/10cm LCD



Transverse Graph



Sonde



Plan View

vLoc3-5000 Receiver Specification	
Construction	High impact thermoplastic (ABS) injection molded housing
Weight & Dimensions	4.6lbs (2.1kg) / 12.6in(L) x 4.9in(W) x 26.6in(H) (321mm x 124mm x 676mm)
Display	Transmissive 480 x 272 Pixel, 16-bit Color, High Visibility LCD, 4.3"
Battery options	Rechargeable custom Lithium-ion batteries with 100-240V AC mains charger Six AA Alkaline batteries
Battery life	Lithium-ion – typically 27-hours intermittent use at 70°F (21°C) Alkaline – typically 12 hours intermittent use at 70°F (21°C)
Operating frequencies	Configurable frequencies from 16Hz to 200kHz Power - 50Hz and 60Hz Radio - 22.7kHz, 10kHz bandwidth Signal Direction - enhanced product model giving direction of outgoing current Signal Select™ – Real-time measurement of signal bleed-over caused by capacitive or inductive coupling to other utilities: SiS-491Hz, SiS-982Hz, SiS-8440Hz, SiS-9820Hz, SiS-35kHz
Operating modes	Classic Locate (2-section Bar graph), Transverse Graph Mode, Plan View (Omni Directional) Vector Locate (Lateral Position & Depth), Sonde Locate
Data logging and transfer	50 Million records - Records include depth, current, frequency, mode, gain setting, signal strength, GPS coordinate, date and time (if Bluetooth active) Download data from receiver using MyLocator3 desktop, save as xlx, txt, fhp, kml files
Environmental	IP65 and NEMA 4

Compatible Transmitters



Loc-10SiS Tx

The Loc-10SiSTx 10-Watt Transmitter provides full support for SiS (Signal Select™) frequencies up to 35kHz. The Broadband Loc3-10SiSTx transmitter has multiple induction and direct-connection frequencies ranging from 16Hz to 200kHz. Additional features of SD (Signal Direction), fault-find and multi-frequency transmit modes are included.

- Auto-impedance matching
- Fault-finding frequencies built in
- Transmit multiple frequencies at once

Popular Accessories

Receiver	 Fault Locator	 Vehicle Charging Lead	 Sondes	 Remote Antenna	
Transmitter	 Rechargeable Battery Option	 Ground Extension Lead	 Live Plug Connector	 Live Cable Connector	 Induction Clamps

Local Vivax-Metrotech Distributor:

Vivax-Metrotech Corporation

3251 Olcott Street, Santa Clara, CA 95054, USA

T/Free: 800-446-3392

Tel: +1-408-734-1400

www.vivax-metrotech.com

