



vLoc3-9800

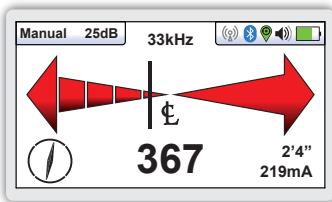
UTILITY LOCATOR

- Distance-sensitive Left / Right Guidance™
- Fully-automatic gain control
- Directional compass indicator
- Internal data logging
- Cloud-based data warehousing
- Optional Bluetooth connectivity

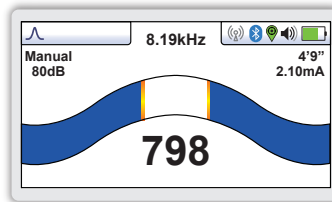
The **vLoc3-9800**'s patented Distance Sensitive Left/Right Guidance and audible tone guide you to the path of the buried utility. The current measurement and compass direction indicator features confirm that you are on target.

The user-configurable vLoc3-9800 contains two passive locate modes, fault-find mode, and a range of configurable frequencies from 98Hz to 131kHz. Visual and mechanical vibration alerts can be configured by the user providing warnings for shallow depth, overload, overhead cables, and excessive swinging. Plug-in-play options for the receiver include an optional Bluetooth module usable with external GPS devices and the plug-in vLoc3-MLA (marker locator adapter) to locate buried markers.

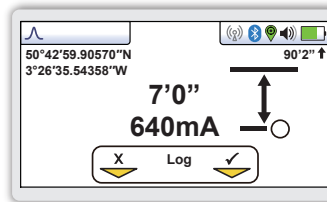
Use the free VM-MAP smartphone application to create real-time maps with GPS data and data from the locator such as time, date, depth of cover, current on the line, and add custom comments to each entry. Data captured by external GPS devices via Bluetooth can be downloaded for further analysis, use with GIS systems or google maps.



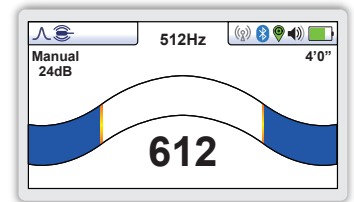
Left/Right Locate Screen - Shows left/right indication, Signal strength with continuous depth and current from the line.



Peak Locate Screen - shows a peak curtain style bar graph, signal strength with continuous depth and current from the line.



Line Info Screen - shows the depth to the utility, current on the line and option to log the locate results. GPS coordinates are shown if active.



Sonde Locate Screen - shows a peak curtain style bar graph, signal strength and continuous depth for sonde locating.

Alkaline and Li-ion Batteries

- Alkaline = typically 12-hours intermittent use
- Li-ion = typically 27-hours intermittent use

USB Data Port

- Download data logs
- Update the receivers firmware
- Add or remove frequencies and options

Accessory Port

- Charge the Li-ion battery
- A-Frame Fault Locator
- Vehicle charging lead
- Remote Stethoscope Antenna

Antenna Configuration

- Distance Sensitive Left/Right Guidance

Ultra Bright LCD

- High visibility 4.3"/10cm LCD
- Auto back-light

Module Compartment

- Optional plug-and-play Bluetooth module

Data Logging

- 50 Million record internal storage
- GPS coordinates (if Bluetooth active)
- Download data with MyLocator app
- Access data via VMMap Cloud app

Construction

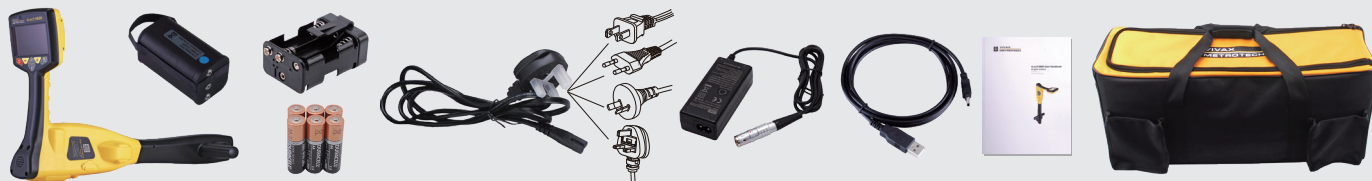
- IP65 and NEMA 4 rating
- Lightweight at 4.6lbs./2kg



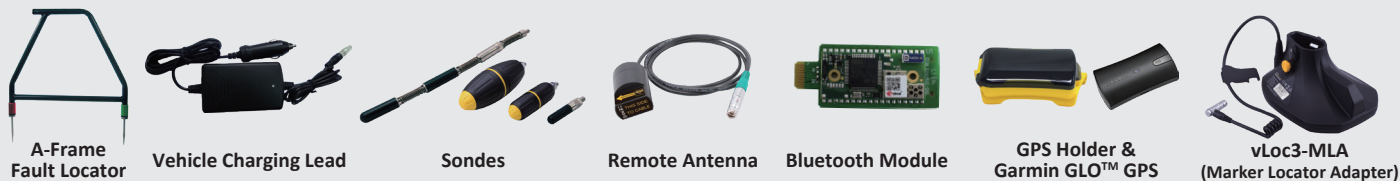
Optional plug-in MLA marker locator

vLoc3-9800 Receiver Specifications	
Construction	High impact ABS injection molded housing
Weight & Dimensions	4.4lbs (2kg) / 12.6in(L) x 8.6in(W) x 26.6in(H) (321mm x 219mm x 676mm)
Display	Transmissive 480 x 272 Pixel, 16-bit Color, High-visibility LCD, 4.3" / 10cm
Battery options	Rechargeable custom Lithium-ion batteries with 100-240V AC mains charger Six AA Alkaline batteries
Battery life	Lithium-ion – typically 27-hours intermittent use at 70°F (21°C) Alkaline – typically 12 hours intermittent use at 70°F (21°C)
Operating frequencies	Configurable frequencies from 98Hz to 200 kHz Power - 50Hz and 60Hz Radio - 10kHz - 22.7kHz bandwidth
Operating modes	Classic Locate left/right indication and Sonde Locate
Data logging and transfer	50 Million records - Records include depth, current, frequency, mode, gain setting, signal strength, GPS coordinate, date and time (if Bluetooth active) Download data from the receiver using the free MyLocator3 desktop app, save as xlx, txt, shp and kml files
Environmental	IP65 and NEMA 4

What's in the box



Popular Accessories



Compatible Transmitters

1- Watt Transmitters



VM-550FF / VM-560FF

5-Watt Transmitter



Loc3-5Tx

10-Watt Transmitter



Loc3-10Tx

Local Vivax-Metrotech Distributor:

Vivax-Metrotech Corporation

3251 Olcott Street, Santa Clara, CA 95054, USA

T/Free: 1-800-446-3392

Tel: +1-408-734-1400

www.vivax-metrotech.com

CONNECT WITH US ON SOCIAL MEDIA



V1.4

Please visit our website for full product specifications.