

vLoc3-Cam SONDE LOCATOR

- Graphical locate display
- Sonde locate and pushrod trace modes
- High visibility color 4.3"/10cm Display
- Optional Bluetooth connectivity for GPS mapping

Finally, the easiest, quickest and most accurate way to locate the position of a sonde is here in the new **vLoc3-Cam Sonde Locator**. The bright color intuitive graphical display directs the user to the sonde with directional arrows which turn into a large sonde icon with the depth reading when on top of it.

The vLoc3-Cam includes multiple sonde frequencies making it compatible with the major push cameras and crawler cameras on the market. The "Pushrod Trace" mode shows a second display geared for tracing the path of the pushrod deployed in the pipe or tracing pipes with an optional portable transmitter.

The vLoc3-Cam comes with two Passive locate modes of Power and Radio which will detect the presence of live power lines, CATV, telephone and some metallic pipes which radiate 50/60 Hz from nearby or overhead power lines. For active locating, with the use of a portable transmitter, the vLoc3-Cam comes with an 83.1kHz frequency for tracing the pushrod. This frequency is also ideal for water and gas utilities which generally are larger pipes with bell housings and gaskets as well as locating ungrounded small diameter drop wires and inducing signals through the soil, onto services when direct connecting is not an option.

Weatherproof speaker

Six x AA Alkaline batteries
Optional Rechargeable Li-ion battery

USB Data Port

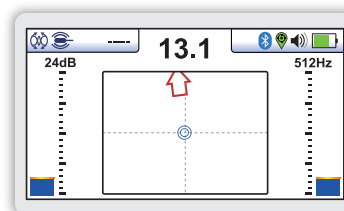
Accessory and charging socket

Two sets of 3D antennas

High visibility 4.3"/10cm LCD

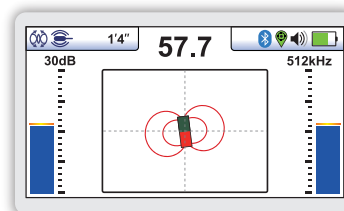
Optional Bluetooth module

High-impact ABS
injected-molded housing



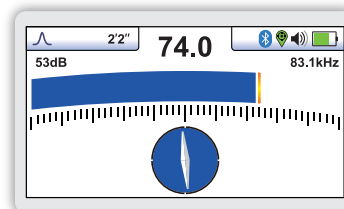
Rear locate point

Shows null behind the sonde and arrow directing to the sonde location



Sonde location

When directly over the sonde the sonde icon appears and depth is shown in upper left



Pushrod trace mode

Shows a peak response when locating. Compass indicator turns blue when in line with the pushrod.

vLoc3-Cam Receiver Specifications	
Construction	High impact ABS injection molded housing
Weight & Dimensions	4.6lbs (2.1kg) / 12.6in(L) x 4.9in(W) x 26.6in(H) (321mm x 124mm x 676mm)
Display	Transmissive 480 x 272 Pixel, 16-bit Color, High Visibility LCD, 4.3"
Battery options	Uses Six AA Alkaline batteries Optional custom Lithium-ion rechargeable battery
Battery life	Alkaline – typically 12 hours intermittent use at 70°F (21°C) Lithium-ion – typically 27-hours intermittent use at 70°F (21°C)
Operating frequencies	Sonde mode – 512Hz, 640Hz, 8.192kHz, 33kHz, and 83kHz Pushrod trace/line trace – 83kHz Power - 50Hz and 60Hz Radio - 10kHz - 22.7kHz bandwidth
Operating modes	Sonde mode Pushrod/line trace mode
Environmental	IP65 and NEMA 4

What's in the box



Popular Accessories



Vehicle Charging Lead



Li-ion Rechargeable Battery



Sondes

Compatible Transmitters



VM-550FF 1-Watt



Loc-1Tx 1-Watt



Loc-55Tx 5-Watt



Loc-10Tx 10-Watt

Local Vivax-Metrotech Distributor:

Vivax-Metrotech Corporation

3251 Olcott Street, Santa Clara, CA 95054, USA

T/Free: 800-446-3392

Tel: +1-408-734-1400

www.vivax-metrotech.com



V1.0